

MEASURE G NEWSLETTER

January 2015



Swing Space

The relocation to the Newark Center and Fremont Campus modular villages began as scheduled, in spite of torrential rain and windstorms. Following the completion of the fall semester final exams, we began to move classrooms and faculty offices on December 15. Over 100 staff and faculty offices and 35 classrooms and labs have been relocated in preparation for the 2015 demolition of Buildings 1, 2, and 8. (See back page for staff and services locations.)



The upper Fremont Campus modular village, on the former Parking Lot B, now houses Engineering, Physics, Anatomy, Biology, and Physiology classrooms, along with science faculty offices, Photography Lab, mail room, Purchasing, and a student lounge.

The Accounting and Speech labs, as well as general classrooms and faculty offices, are located in Fremont's lower swing space, formerly Lot C.

The Newark Center swing space is home to classrooms and lab space for Microbiology, Biotech/Biomed, Geography, Anthropology, as well as general classrooms and faculty offices.

Every effort has been made to create an inviting academic space at the modular villages that is both functional and within budget. The student lounge will have a coffee and drink kiosk. Keeping with the design of the future classrooms and buildings, the temporary classrooms provide a learning environment rich in natural lighting. Outdoor gathering areas with seating and landscaping have also been installed to provide a more attractive environment.

At a minimum, the modular villages will be in place for the three years needed to complete the construction of the new Academic Core Buildings. Portions may remain beyond that time frame to provide temporary space while other buildings are renovated as part of the Measure G Bond Program.

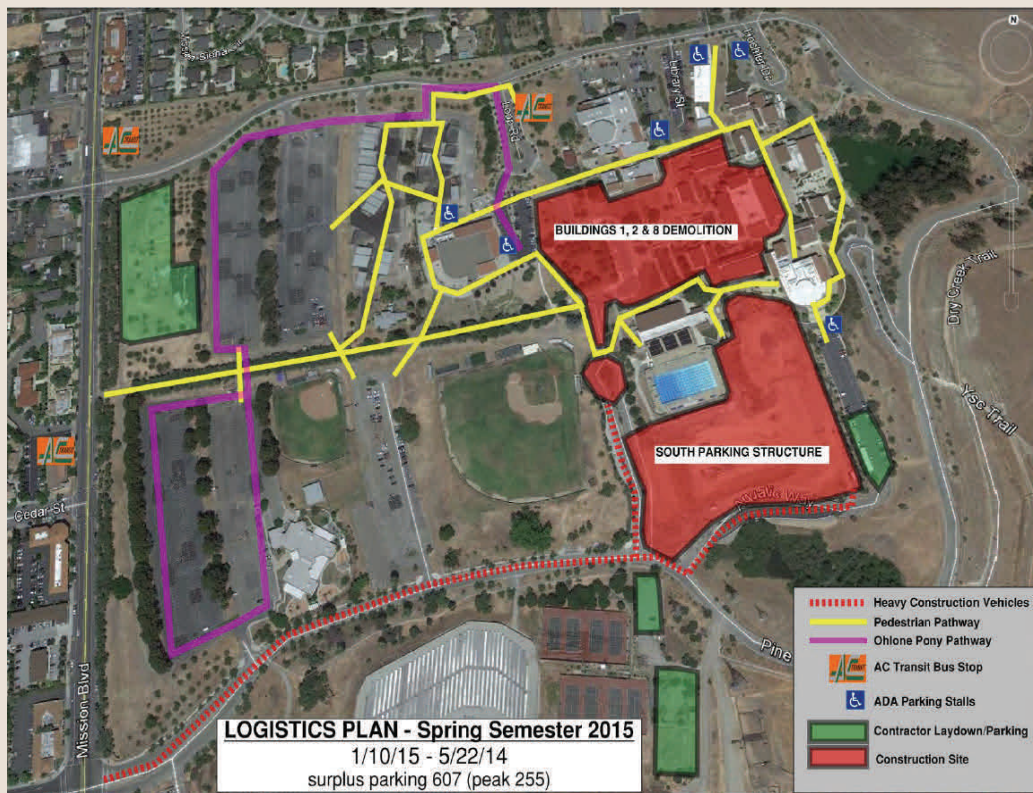
Measure G was approved by district voters in November 2010. We are grateful for the community's support in funding necessary repairs, accessibility upgrades and new construction projects to better serve the instructional needs of our students.

Academic Core Project

This exciting project continues on schedule. Student and staff safety remains a priority. During the spring 2015 semester, the Academic Core Buildings project site will be fully fenced and inaccessible to non-authorized personnel. The construction team will perform abatement of any hazardous materials, remove surplus equipment, and prepare the buildings for complete demolition, which will begin immediately following graduation on June 1.

None of the buildings will be “imploded”, as much fun as we think that would be. Buildings 1, 2, and 8 will be destroyed using heavy equipment. All material will be removed through a double gate system on the southwest end of the construction area below Building 9. The gates will normally remain open for pedestrian traffic, but when trucks need to enter or leave the construction site, the gates will be temporarily closed to pedestrians.

Pedestrian closures will be minimized to the extent possible to reduce disruptions, but students and faculty are advised to allow adequate time to move around campus considering that over 20 acres will be under construction.



JANUARY 5 - 16
Redwood salvage for repurposing in the new buildings

JANUARY 6 - 23
Removal of specific trees prior to nesting season

JUNE 1 - AUGUST 14
Demolition of buildings 1, 2, and 8

Academic Core 2015 Phases

JANUARY 6 - 12
Fencing of project site

FEBRUARY 1 - MAY 31
“Soft” interior demolition and abatement

AUGUST 17
Construction starts



South Parking Structure

Heavy rains during December, as welcome as they are to the state, tried to put a damper on the South Parking Structure construction. Working most weekends, however, has allowed the contractor to maintain schedule. As planned, over 900 parking spaces will be available when the new structure opens for the fall 2015 semester.

The tiered parking structure will be available to faculty, staff, students, and the public. Some spaces will be reserved for staff parking only. There will be digitally lighted signage at the entrance that will indicate how many parking spaces are available on each level.

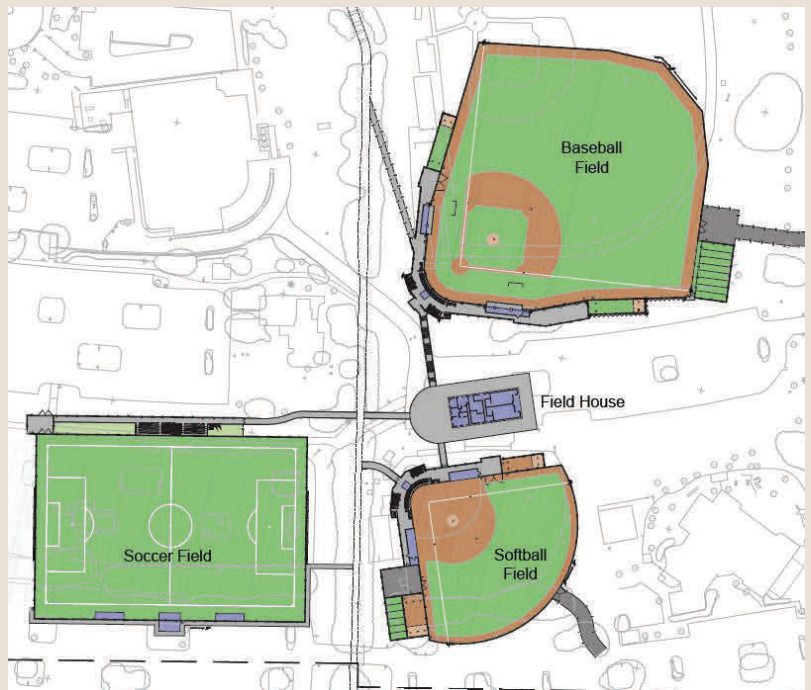


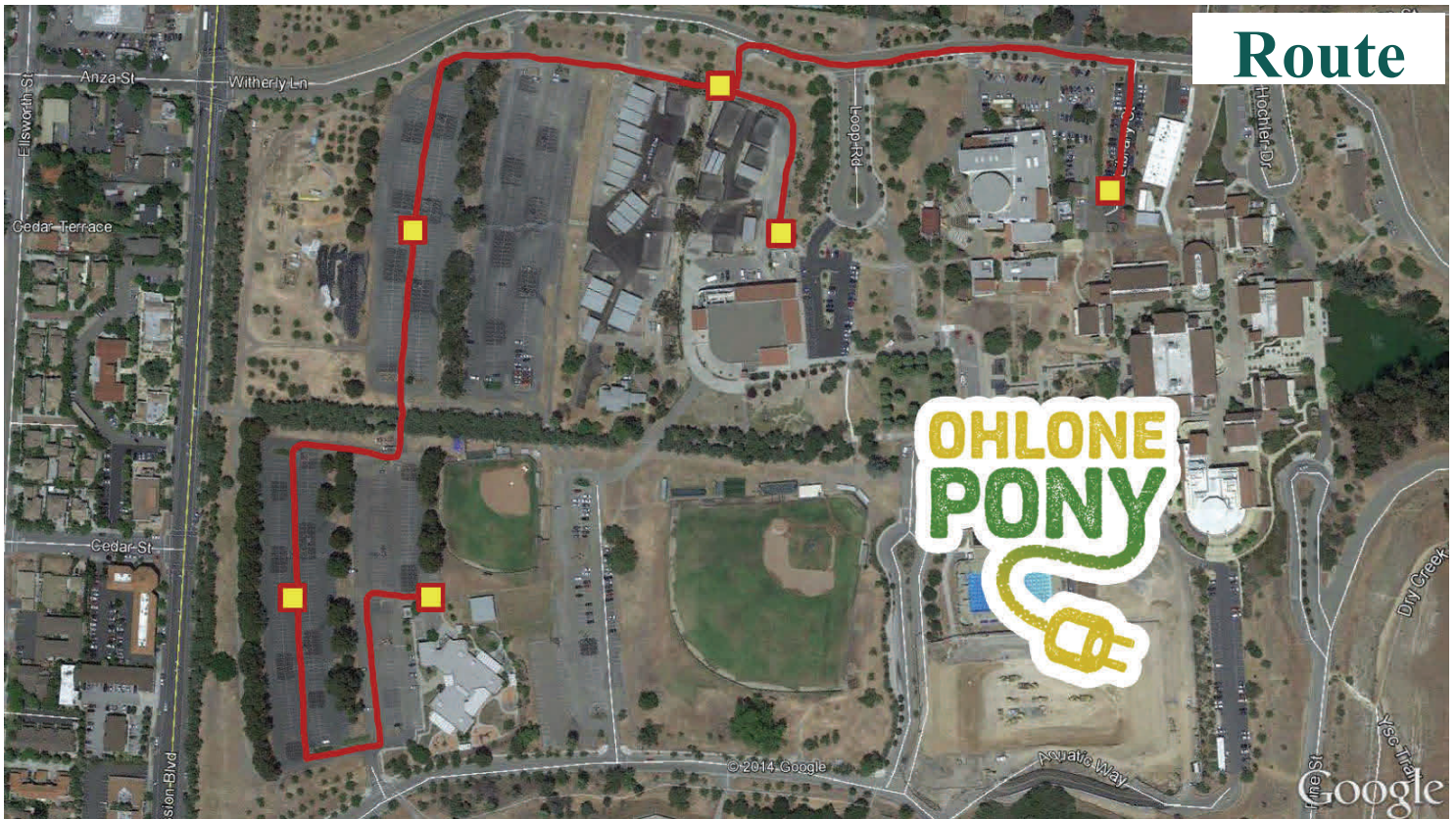
Athletic Fields

The Athletic Fields Project will provide a new baseball field and women's softball field in the current locations, although somewhat reconfigured. Soccer will be returning to the Fremont campus with a new soccer field to be constructed at Parking Lot D. The Athletic Fields project includes complete irrigation and landscaping, dugouts and storage, soccer team rooms and public restrooms, a field house including storage and public restrooms and ADA Accessibility.

Besides Ohlone College representatives, the Measure G team includes the architect, Verde Design, and the Lease Leaseback Contractor, C.W. Driver, along with the program and construction manager, Gilbane Building Co.

The project design is complete and was submitted to the Division of State Architect in December for permits. Construction will begin this summer, immediately following the completion of the spring semester. The baseball and softball fields will be finished first in order to support the opening of their 2016 season, with the soccer field being completed by summer 2016.





Route

Who Moved Where?

ACCOUNTING LAB	FP 23
BOOKSTORE	Building 5
CAFETERIA	Building 5
CASHIER	Building 7 (Feb. 5), Building 19 (after Feb. 6)
COLLEGE ADVANCEMENT / PIO	Hyman Hall
CURRICULUM & SCHEDULING	Building 7
ENGLISH LEARNING CENTER	Hyman Hall
GRAPHIC ARTS	Hyman Hall
HUMAN RESOURCES	Building 19
IT	FP 18
BUSINESS, TECHNOLOGY & LEARNING RESOURCES (DEAN)	FP 21
LIBRARY	Hyman Hall
MAIL ROOM	FP 29
MUSIC	Building 4
MUSIC (BAND)	Smith Center - Studio B
PURCHASING	FP 28
SCIENCE, ENGINEERING, MATHEMATICS (DEAN)	FP 26

Watch green power being produced from the new solar installations live at:
 Fremont: <http://bit.ly/1dTHSvr> and Newark: <http://bit.ly/1eURGY9>