

January 2019

MEASURE G NEWSLETTER



Academic Core Buildings Moving Forward

Three new buildings under construction at the center of the Fremont campus have made significant progress over recent months. The exterior walls of each building are at different stages of completion and observers will note varying finishes: stucco plaster, tinted glass, aluminum panels and colored concrete.

The interior work is also making great strides toward completion. With the majority of wall framing and wall board installations done, trades workers are completing the necessary electrical, plumbing and mechanical systems. Shortly after these activities, the ceilings will begin to drop in place and final activities such as carpet, tile, paint, and cabinetry will begin.



*Academic Core Building 2
South Elevation*



Main Street Site Work

Below the buildings, underground utilities are being installed with large insulated hydronic piping routed from the new central utility plant through the new buildings, then out toward existing buildings including Building 5 and the Smith Center. Once complete, construction crews will replace Main Street to its former grading and place new concrete hardscaping, benches and trees. The project also includes extensive pathways, site lighting, landscaping, and exterior furnishings.

During this site work, a temporary pedestrian pathway will be necessary at the east (uphill) and north (near Building 4) sides of the project. Please pay attention to the signage provided and plan for a few extra minutes as you make your way around campus. This temporary inconvenience is necessary to ensure the safety of all campus visitors. See the back page of this newsletter for an overview of pathways.



Pedestrian pathways during construction

Measure G was approved by district voters in November 2010. We are grateful for the community's support in funding necessary repairs, accessibility upgrades and new construction projects to better serve the instructional needs of our students.

Academic Core Buildings Moving Forward.. (continued)



Academic Core Building 3 – Southeast corner

Concurrent with the construction, a coordinated effort is underway to ensure that all new furniture and equipment required is purchased and delivered on time for the start of academic instruction. The new facility will require over 2,250 new chairs and benches to ensure everyone has a place to sit when they need to!



Left to right: Academic Core Buildings 1, 2, and 3

The completed project will provide over 185,000 square feet of new classroom, lecture, lab, office, and meeting space on the Fremont campus. All work on the project is expected to conclude later this year. Announcements will be made regarding the opening ceremony and the start of functional use.

Building 1 will provide space dedicated to science, including laboratories for chemistry, physics, engineering, biology, microbiology, biotechnology, geology, geography, anthropology, and anatomy and physiology. Building 2 will be situated adjacent to the Smith Center and will focus on instruction and performing arts. Within the building, photography, painting, interior design, ceramics, sculpture, and music will all have dedicated spaces. Building 3 will include 24 classrooms for general instruction, and dedicated tutoring and testing spaces. Building 3 also provides over 24,000 square feet of library learning center space for research and study. In addition, the new Academic Core Buildings will provide staff and faculty offices, as well as a new central utilities plant.

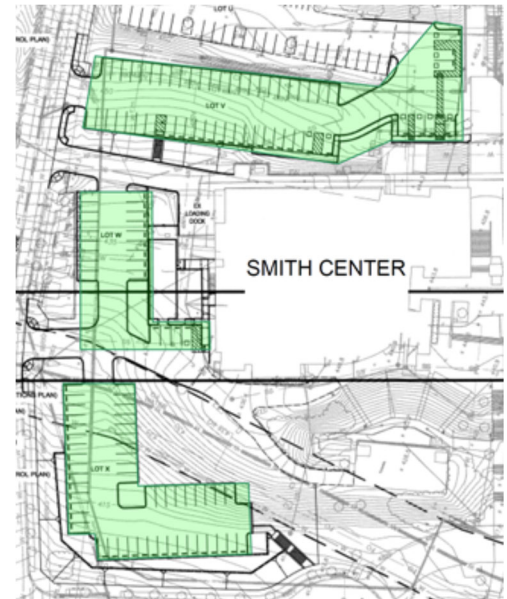
A model of the buildings can be seen in the first-floor lobby of the Student Services Center in Building 7. Additionally, time lapse videos of the construction completed to date can be seen at ohlonebond.com. To track progress live as it occurs, you can view the webcams at <http://ohlonebond.com/webcam-1/>.

New North Parking Project to Start Construction in Early 2019

Visitors who drive up Witherly Lane on the north side of the Fremont campus may have found difficulty parking at or around the Smith Center. Parking there is a bit challenging due to the circulation and slope of the lots, particularly lots U, V, and W. Fortunately, the Measure G program has a project planned to improve these conditions.

The new North Parking replacement project will provide a 70-stall increase in parking capacity, utilize safer layouts for pedestrians, improve the level and quality of the asphalt surfacing, and ensure proper circulation for vehicles. This project will also include signage and landscaping as well as a new storage building to replace the existing metal storage containers that support the needs of the Smith Center.

This project received a permit for construction after a review by the Division of State Architect and construction is expected to begin as soon as the spring semester is complete. The project will require extensive earthwork, concrete, and paving to complete the required scope. The construction phase will take approximately eight months. Upon completion, the New Academic Core will be flanked by the south parking structure and the new north parking which will create a dynamic corridor for vehicle arrivals and departures and, more importantly, for pedestrians to circulate across campus over level ground.



Future North Parking Plan

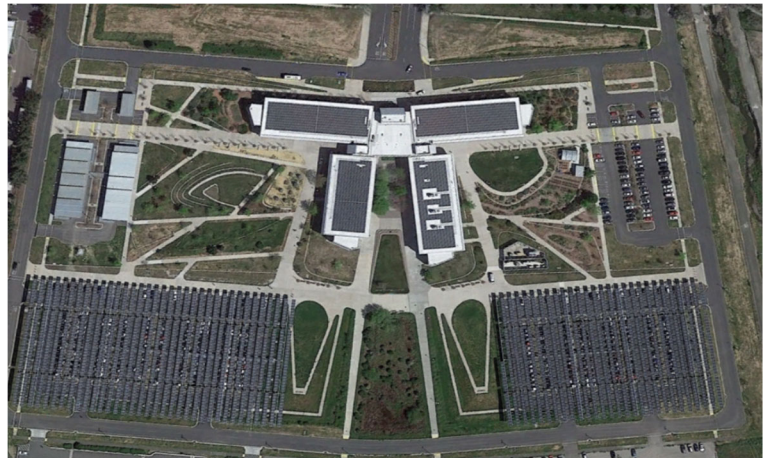
Site Security Systems Improvements at Newark Center

The Newark Site Security Systems project is an exciting upgrade that will enhance security at the Newark Center. Campus Police, the Facilities Department, a carefully selected engineering team, and Gilbane (the District's construction manager) developed a plan for the project to bring the Newark Center into alignment with the District's security master plan.

The project adds electronic access card readers to exterior and interior doors, upgrades and installs new security cameras, and adds emergency blue phone towers to the exterior parking lots. The project will allow the building to be locked down in the event of a security emergency to help keep students and occupants safe. New cameras provide high-quality surveillance images to assist Campus Police with identification of emergencies and suspects. The added emergency blue phone towers also give students and faculty the ability to contact Campus Police from exterior parking lots in the event of an emergency.

John Worley, Ohlone Chief of Campus Police Services, noted that Campus Police Services' mission is to facilitate a safe and secure learning and working environment for students, faculty, staff, and guests. The planned upgrades to the Newark Center security system, in alignment with the Security Systems Master Plan, will effectively enhance our ability to achieve this mission."

Construction is scheduled to be complete in February.



Newark Center Aerial View



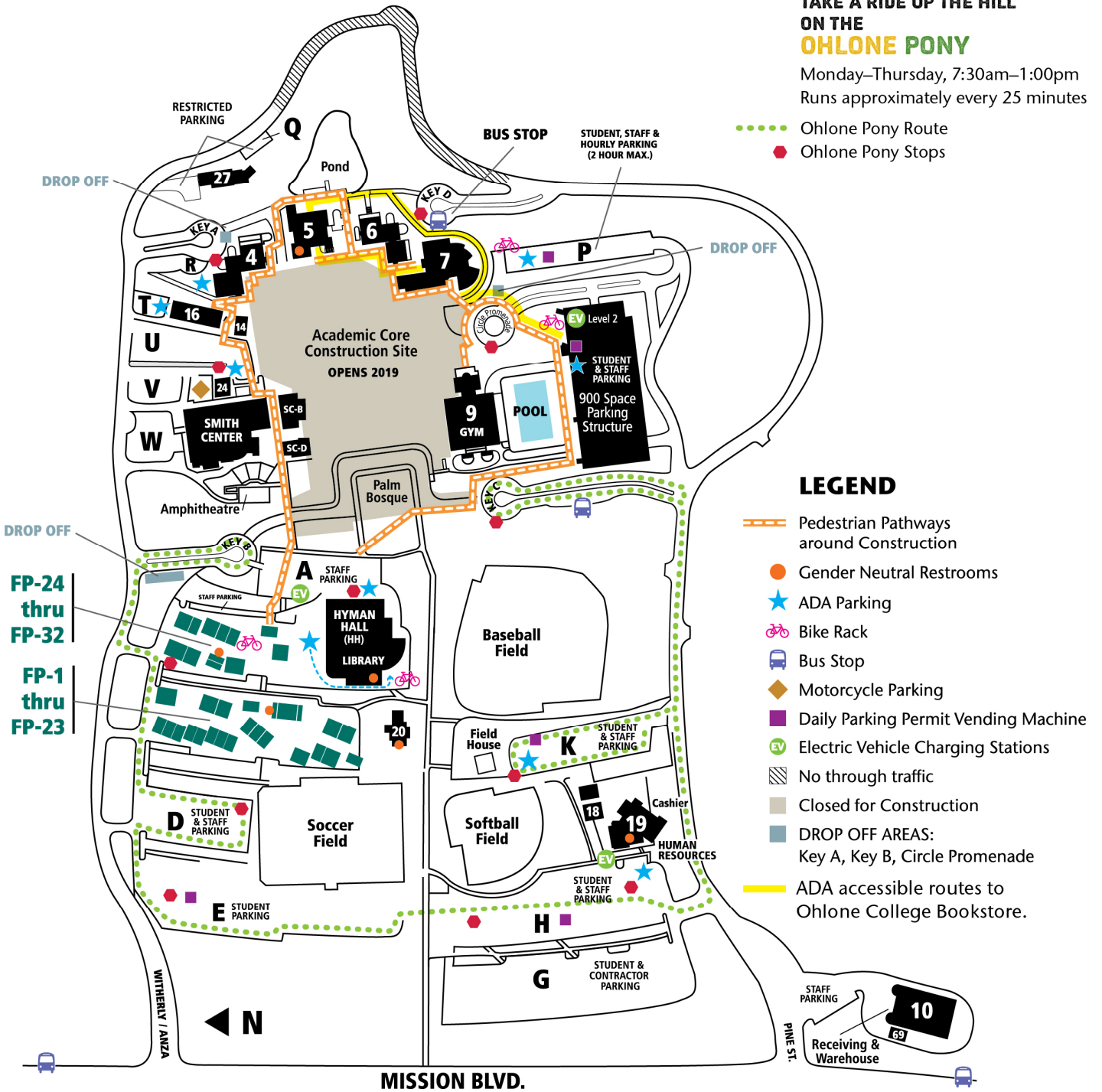
OHLONE COLLEGE

Fremont Campus Map with Detours

TAKE A RIDE UP THE HILL ON THE OHLONE PONY

Monday–Thursday, 7:30am–1:00pm
Runs approximately every 25 minutes

- Ohlone Pony Route
- Ohlone Pony Stops



LEGEND

- Pedestrian Pathways around Construction
- Gender Neutral Restrooms
- ★ ADA Parking
- 🚲 Bike Rack
- 🚌 Bus Stop
- ◆ Motorcycle Parking
- 📦 Daily Parking Permit Vending Machine
- EV Electric Vehicle Charging Stations
- ⚡ No through traffic
- 🚧 Closed for Construction
- 🚗 DROP OFF AREAS:
Key A, Key B, Circle Promenade
- 👉 ADA accessible routes to Ohlone College Bookstore.

Watch the Academic Core buildings progress live at: ohlonebond.com/webcam-1



For more information related to Measure G, please visit: www.ohlonebond.org